

BiPAC 7402R2

ADSL2+ VPN Firewall Router

Quick Start Guide



For more detailed instructions on configuring and using the ADSL2+ VPN Firewall Router, please refer to the on-line manual.

Package Contents

- BiPAC 7402R2 ADSL2+ VPN Firewall Router
- CD-ROM containing the online manual
- RJ-11 ADSL/telephone Cable
- Ethernet (CAT-5 LAN) Cable
- Console (PS2-RS232) Cable
- AC-DC power adapter (12VDC, 1A)
- This Quick Start Guide



Warning

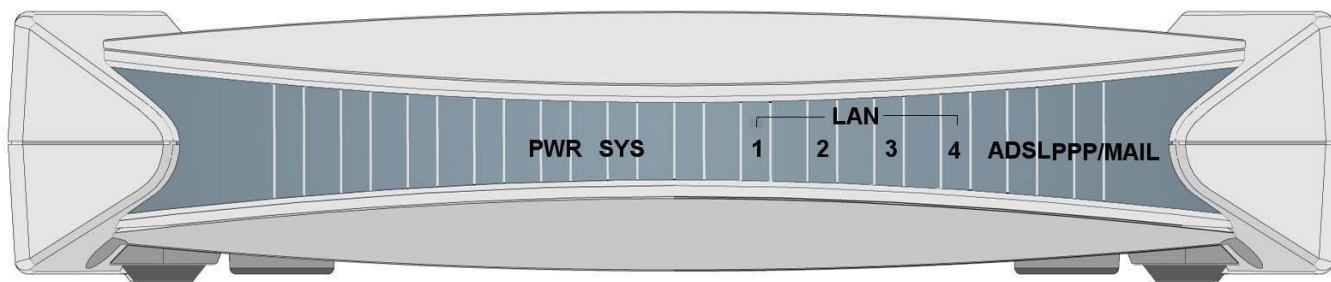
- ✓ Do not use this router in high humidity or high temperatures.
- ✓ Do not use the same power source for this router as other equipment.
- ✓ Do not open or repair the case yourself. If this router is too hot, turn off the power immediately and have it repaired at a qualified service center.
- ✓ Avoid using this product and all accessories outdoors.



Attention

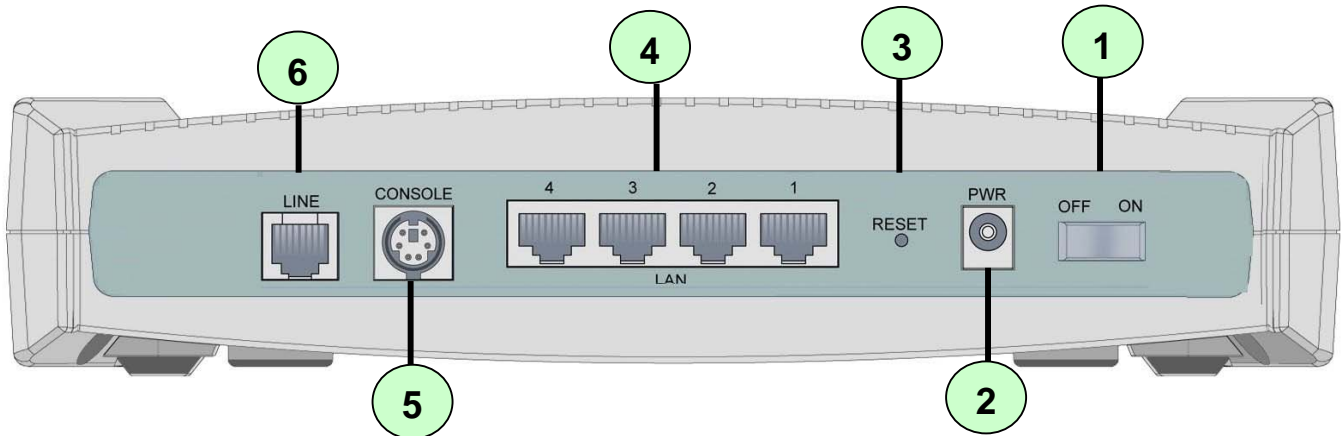
- ✓ Place this router on a stable surface.
- ✓ Only use the power adapter that comes with the package. Using a different voltage rating power adaptor may damage this router.

The Front LEDs



LED	Meaning
PPP / MAIL	Lit steady when there is a PPPoA / PPPoE connection. Lit and flashed periodically when there is email in the Inbox.
ADSL	When lit, it indicates that the ADSL (Line) port is connected to the DSLAM and working properly.
LAN Port 1X — 4X (RJ-45 connector)	Lit when the LAN link is connected to an Ethernet device. Green for 100Mbps; Orange for 10Mbps. Blinking when data is Transmitted / Received.
SYS	Lit when the system is ready.
PWR	Lit when power is ON.

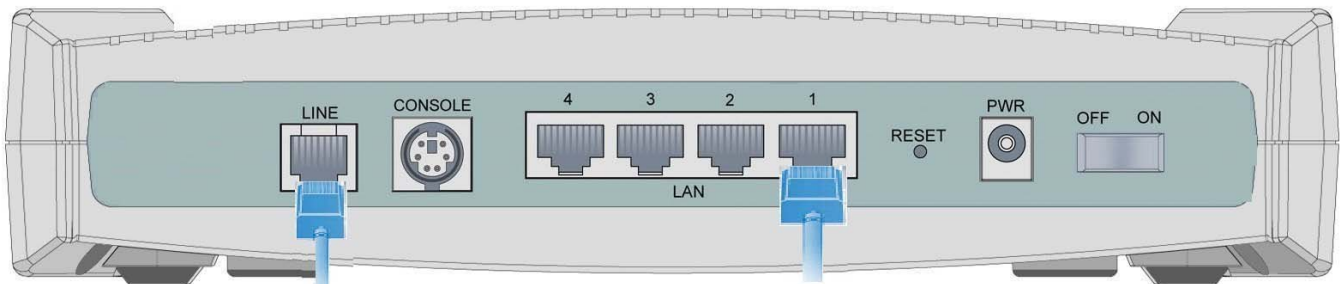
The Rear Ports



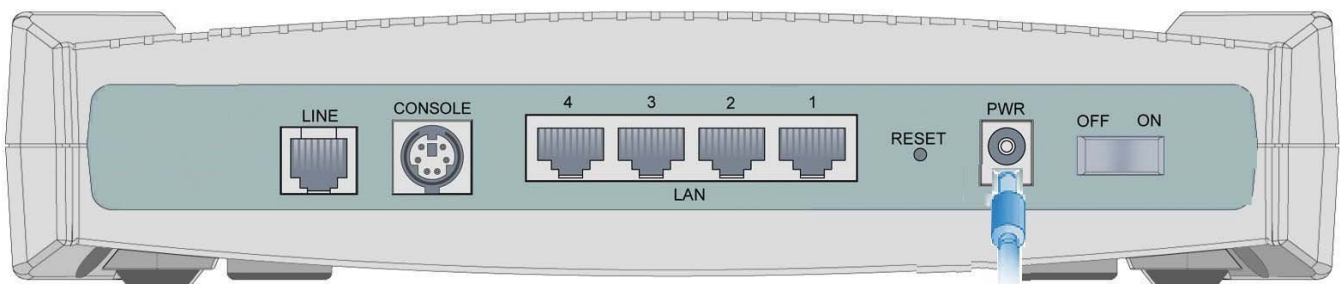
Port		Meaning
1	Power Switch	Power ON/OFF switch
2	PWR	Connect the supplied power adapter to this jack.
3	RESET	After the device is powered on, press it to reset the device or restore to factory default settings. 0-3 seconds: reset the device 6 seconds above: restore to factory default settings (this is used when you can not login to the router, e.g. forgot the password)
4	LAN 1X — 4X (RJ-45 connector)	Connect a UTP Ethernet cable (Cat-5 or Cat-5e) to one of the four LAN ports when connecting to a PC or an office/home network of 10Mbps or 100Mbps.
5	CONSOLE	Connect a PS2/RS-232 cable to this port when connecting to a PC's RS-232 port (9-pin serial port).
6	LINE	Connect the supplied RJ-11 ("telephone") cable to this port when connecting to the ADSL/telephone network.

Connecting Your ADSL Router

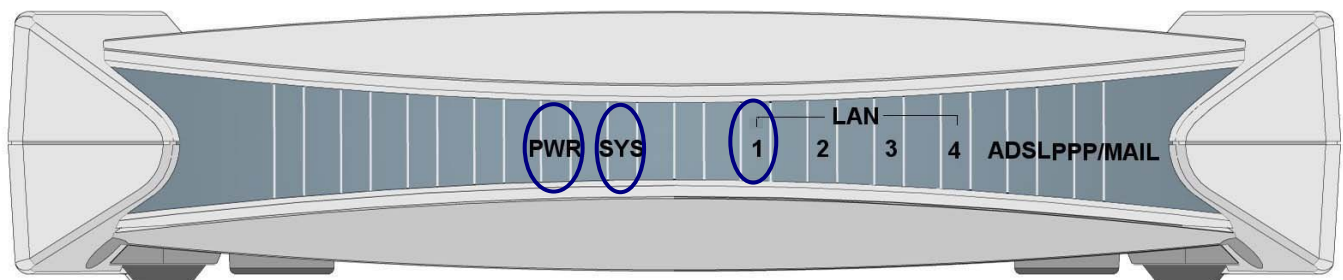
1. Connect the Router to a **LAN** (Local Area Network) and the ADSL/telephone (**LINE**) network.



2. Power on the device.

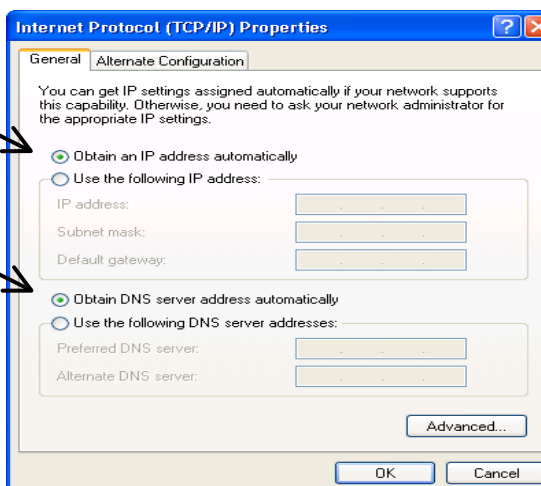
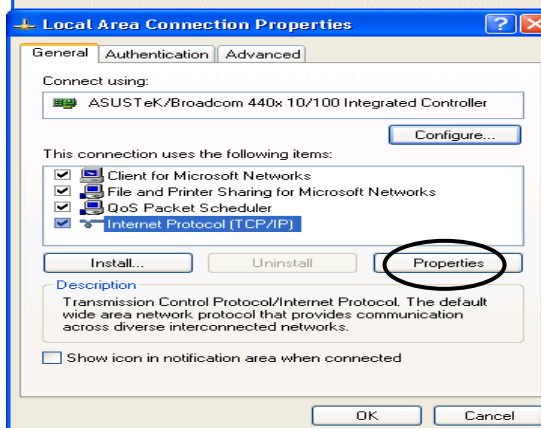
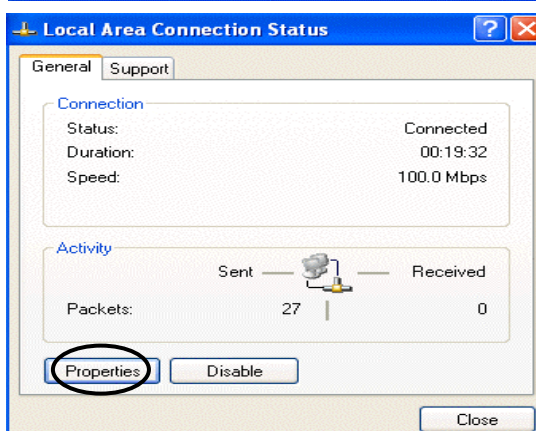


3. Make sure the **PWR** and **SYS** LEDs are lit steadily and that the **relevant LAN** LED is lit.



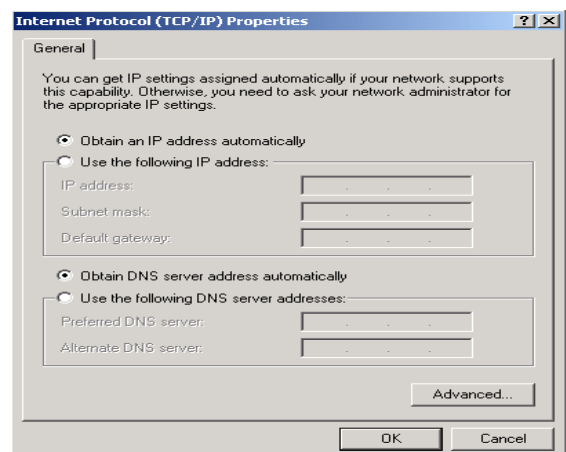
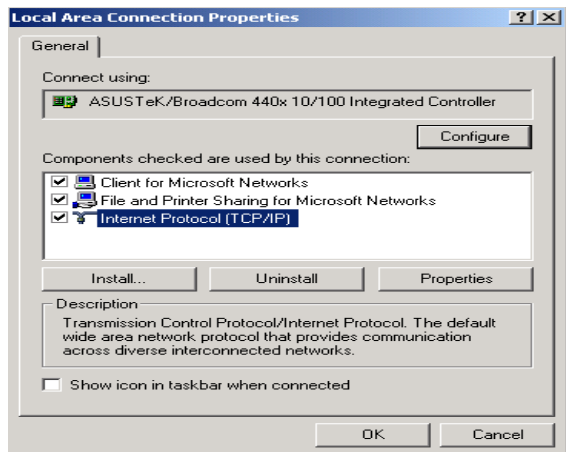
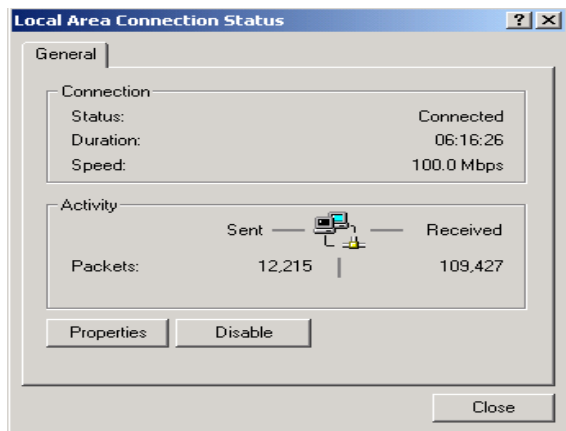
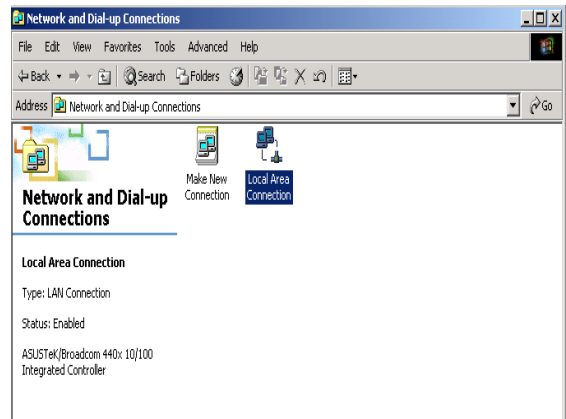
Configuring PC in Windows XP

1. Go to **Start / Control Panel (in Classic View)**. In the Control Panel, double-click on **Network Connections**
2. Double-click **Local Area Connection**.
3. In the **Local Area Connection Status** window, click **Properties**.
4. Select **Internet Protocol (TCP/IP)** and click **Properties**.
5. Select the **Obtain an IP address automatically** and the **Obtain DNS server address automatically** radio buttons.
6. Click **OK** to finish the configuration.



Configuring PC in Windows 2000

1. Go to **Start / Settings / Control Panel**. In the Control Panel, double-click on **Network and Dial-up Connections**.
2. Double-click **Local Area Connection**.
3. In the **Local Area Connection Status** window click **Properties**.
4. Select **Internet Protocol (TCP/IP)** and click **Properties**.
5. Select the **Obtain an IP address automatically** and the **Obtain DNS server address automatically** radio buttons.
6. Click **OK** to finish the configuration.

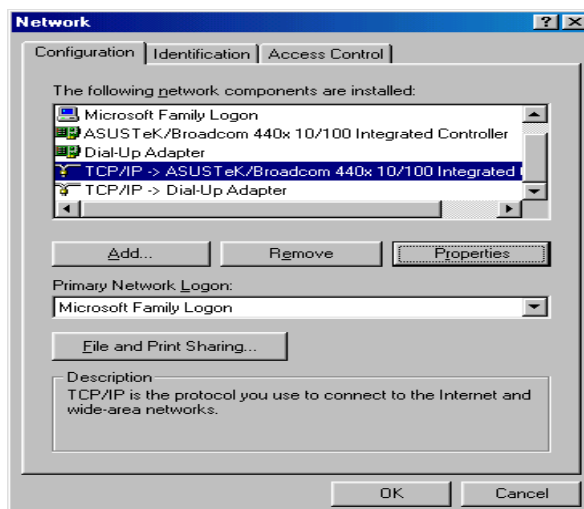


Configuring PC in Windows 98/Me

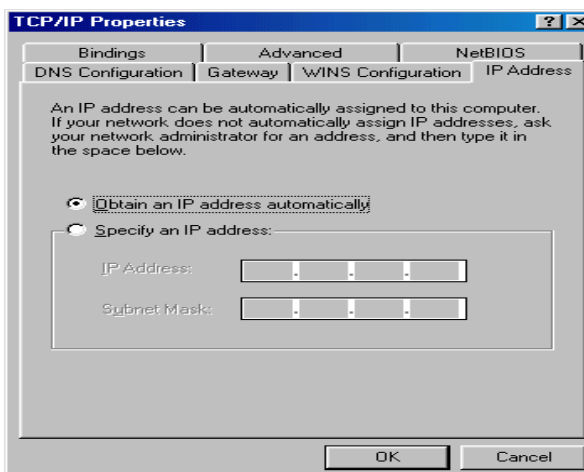
1. Go to **Start / Settings / Control Panel**. In the Control Panel, double-click on **Network** and choose the **Configuration** tab.

2. Select **TCP/IP ->**

NE2000 Compatible, or the name of your Network Interface Card (NIC) in your PC.

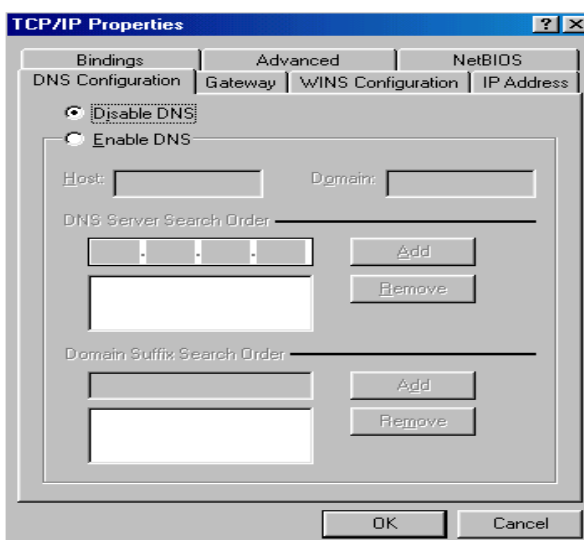


3. Select the **Obtain an IP address automatically** radio button.



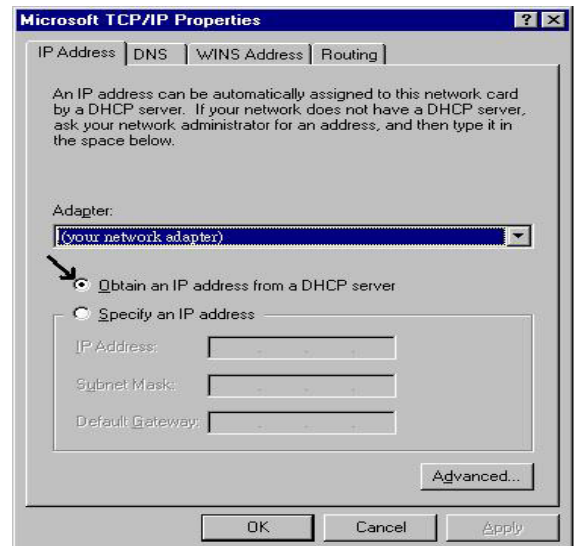
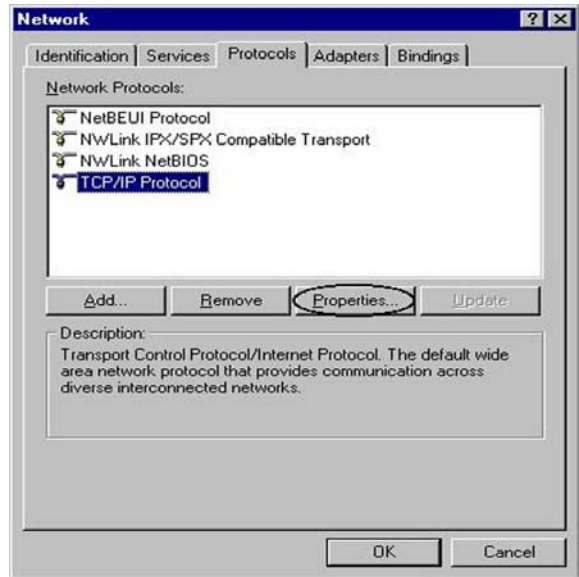
4. Then select the **DNS Configuration** tab.

5. Select the **Disable DNS** radio button and click **OK** to finish the configuration.



Configuring PC in Windows NT4.0

1. Go to **Start / Settings / Control Panel**. In the Control Panel, double-click on **Network** and choose the **Protocols** tab.
2. Select **TCP/IP Protocol** and click **Properties**.
3. Select the **Obtain an IP address from a DHCP server** radio button and click **OK**.



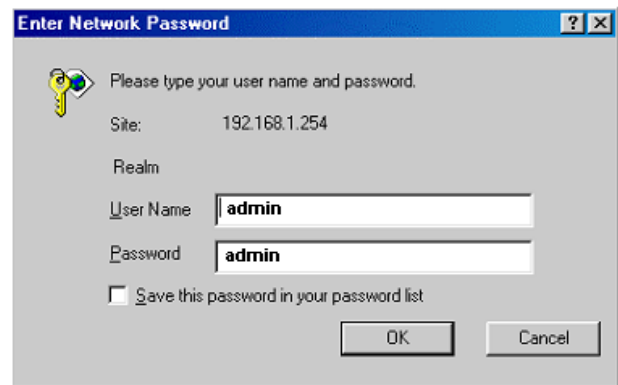
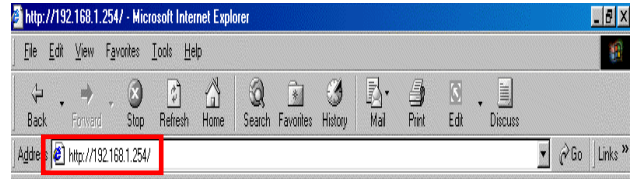
Configuring Your ADSL2+ VPN Firewall Router



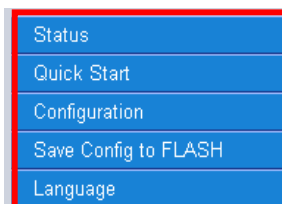
To configure this device, you must have IE 5.0 / Netscape 4.5 or above installed

■ Connecting to the Router

1. Open the web browser and type <http://192.168.1.254> in the browser's address box. This number is the default IP address for this router. Press **Enter**.
2. A user name and password window will appear. The default **User Name** and **Password** are "admin" and "admin". Press **OK** to logon to the router.



3. You will get a status report web page and main menu screen.



Navigation panel

Status	
Device Information	
Model Name	
Host Name	home.gateway
System Up-Time	00:07:14s
Current Time	Thu, 01 Jan 1970 - 00:07:14 <input type="button" value="Sync Now"/>
Hardware Version	Argon 431/451 ADSL-A2/GVO v1.00
Software Version	5.01.dk2
MAC Address	00:04:ED:FF:FA:FA
Home URL	Billion Electric Co., Ltd.
LAN	
IP Address	192.168.1.254
SubNetmask	255.255.255.0
DHCP Server	Enabled
WAN	
ipwan	
VPI / VCI	0 / 32
PPPoE Connection	xDSL line is not synchronized
IP Address	0.0.0.0
SubNetmask	0.0.0.0

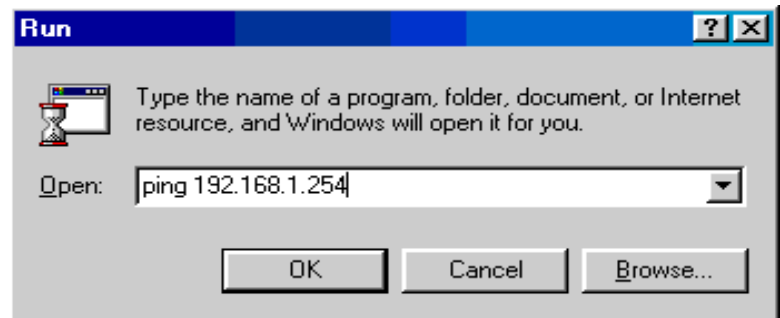
At the main menu screen, the left navigation panel where bookmarks are provided links you directly to the desired setup page, including:

- **Status** (ARP Table, Routing Table, DHCP Table, PPTP Status, IPSec Status, L2TP Status, Email Status, Event Log, Error Log, NAT Sessions and UPnP Portmap)
- **Quick Start**
- **Configuration** (LAN, WAN, System, Firewall, VPN, QoS, Virtual Server, Time Schedule and Advanced)
- **Save Config to FLASH**
- **Language** (provides user interface in English and French languages).

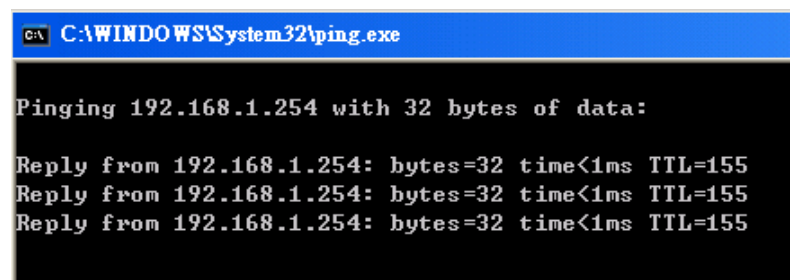
Please see the relevant sections of on-line manual for detailed instructions on how to configure your router.

■ Verifying Your Local Network Connection with the Device

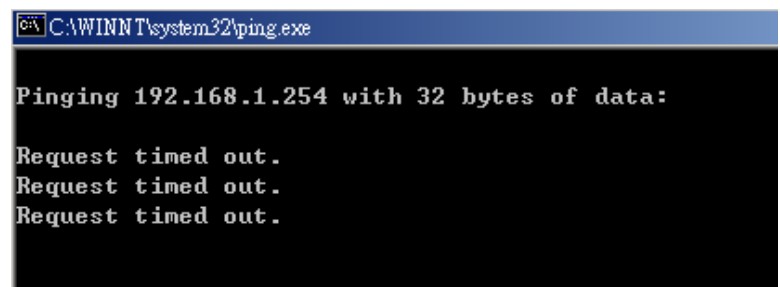
To see if this ADSL Router is visible on the local network, go to **Start / Run**. In the Run dialog box, type “**ping 192.168.1.254**” then press **OK**.



A command prompt window will pop out. If your ping is successful which means your local network is able to reach to the device, then the command prompt window will close up automatically.



Connection fails, when you see “**Request timed out**” in the command prompt window. You may need to check your set up.



Product Support and Contact Information

Most problems can be solved by referring to the **Troubleshooting** section in the User's Manual. If you cannot resolve the problem with the **Troubleshooting** chapter, please contact the dealer where you purchased this product.

Contact Billion

AUSTRALIA

<http://www.billion.com.au>

©2005 Billion Electric Co Ltd., PC Range P/L. All Rights Reserved.

WORLDWIDE

<http://www.billion.com>